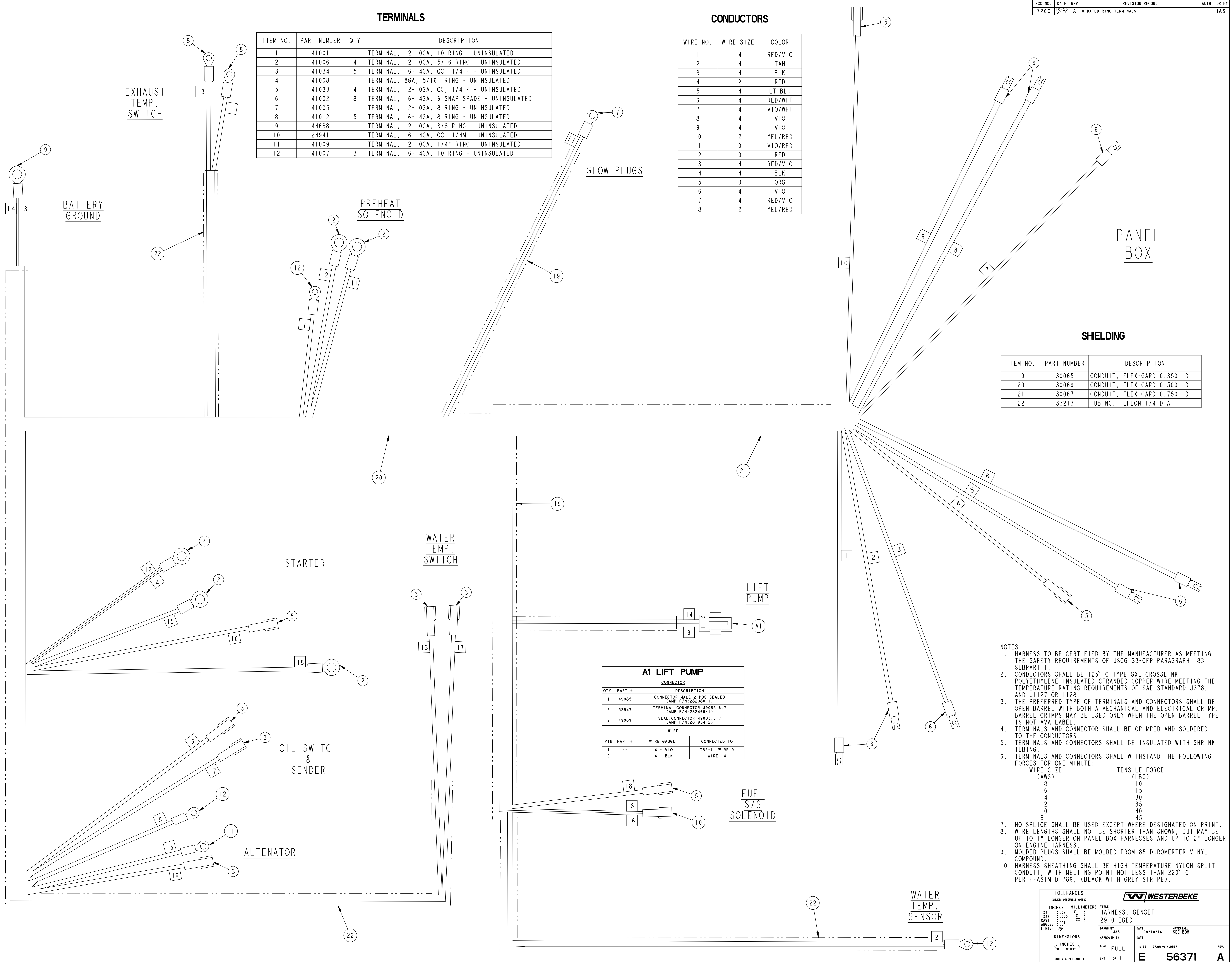


TERMINALS

ITEM NO.	PART NUMBER	QTY	DESCRIPTION
1	41001	1	TERMINAL, 12-10GA, 10 RING - UNINSULATED
2	41006	4	TERMINAL, 12-10GA, 5/16 RING - UNINSULATED
3	41034	5	TERMINAL, 16-14GA, OC, 1/4 F - UNINSULATED
4	41008	1	TERMINAL, 8GA, 5/16 RING - UNINSULATED
5	41033	4	TERMINAL, 12-10GA, OC, 1/4 F - UNINSULATED
6	41002	8	TERMINAL, 16-14GA, 6 SNAP SPADE - UNINSULATED
7	41005	1	TERMINAL, 12-10GA, 8 RING - UNINSULATED
8	41012	5	TERMINAL, 16-14GA, 8 RING - UNINSULATED
9	44688	1	TERMINAL, 12-10GA, 3/8 RING - UNINSULATED
10	24941	1	TERMINAL, 16-14GA, OC, 1/4M - UNINSULATED
11	41009	1	TERMINAL, 12-10GA, 1/4" RING - UNINSULATED
12	41007	3	TERMINAL, 16-14GA, 10 RING - UNINSULATED

CONDUCTORS

WIRE NO.	WIRE SIZE	COLOR
1	14	RED/VIO
2	14	TAN
3	14	BLK
4	12	RED
5	14	LT BLU
6	14	RED/WHT
7	14	VIO/WHT
8	14	VIO
9	14	VIO
10	12	YEL/RED
11	10	VIO/RED
12	10	RED
13	14	RED/VIO
14	14	BLK
15	10	ORG
16	14	VIO
17	14	RED/VIO
18	12	YEL/RED



SHIELDING

ITEM NO.	PART NUMBER	DESCRIPTION
19	30065	CONDUIT, FLEX-GARD 0.350 ID
20	30066	CONDUIT, FLEX-GARD 0.500 ID
21	30067	CONDUIT, FLEX-GARD 0.750 ID
22	33213	TUBING, TEFLON 1/4 DIA

A1 LIFT PUMP			
CONNECTOR			
QTY.	PART #	DESCRIPTION	
1	49085	CONNECTOR, MALE, 2 POS SEALED (AMP P/N: 282080-1)	
2	52547	TERMINAL CONNECTOR 49085, 6, 7 (AMP P/N: 282466-1)	
2	49089	SEAL CONNECTOR 49085, 6, 7 (AMP P/N: 281934-2)	
WIRE			
PIN	PART #	WIRE GAUGE	CONNECTED TO
1	--	14 - VIO	TB2-1, WIRE 9
2	--	14 - BLK	WIRE 14

- NOTES:
- HARNESS TO BE CERTIFIED BY THE MANUFACTURER AS MEETING THE SAFETY REQUIREMENTS OF USCG 33-CFR PARAGRAPH 183 SUBPART 1.
 - CONDUCTORS SHALL BE 125° C TYPE GXL CROSSLINK POLYETHYLENE INSULATED STRANDED COPPER WIRE MEETING THE TEMPERATURE RATING REQUIREMENTS OF SAE STANDARD J378; AND J1127 OR 1128.
 - THE PREFERRED TYPE OF TERMINALS AND CONNECTORS SHALL BE OPEN BARREL WITH BOTH A MECHANICAL AND ELECTRICAL CRIMP. BARREL CRIMPS MAY BE USED ONLY WHEN THE OPEN BARREL TYPE IS NOT AVAILABLE.
 - TERMINALS AND CONNECTOR SHALL BE CRIMPED AND SOLDERED TO THE CONDUCTORS.
 - TERMINALS AND CONNECTORS SHALL BE INSULATED WITH SHRINK TUBING.
 - TERMINALS AND CONNECTORS SHALL WITHSTAND THE FOLLOWING FORCES FOR ONE MINUTE:

WIRE SIZE (AWG)	TENSILE FORCE (LBS)
18	10
16	15
14	30
12	35
10	40
8	45
 - NO SPLICE SHALL BE USED EXCEPT WHERE DESIGNATED ON PRINT.
 - WIRE LENGTHS SHALL NOT BE SHORTER THAN SHOWN, BUT MAY BE UP TO 1" LONGER ON PANEL BOX HARNESSES AND UP TO 2" LONGER ON ENGINE HARNESS.
 - MOLDED PLUGS SHALL BE MOLDED FROM 85 DUOMERTER VINYL COMPOUND.
 - HARNESS SHEATHING SHALL BE HIGH TEMPERATURE NYLON SPLIT CONDUIT, WITH MELTING POINT NOT LESS THAN 220° C PER F-ASTM D 789, (BLACK WITH GREY STRIPE).

TOLERANCES (UNLESS OTHERWISE NOTED)		WESTERBEKE	
INCHES	MILLIMETERS	TITLE	
.XX	.05	HARNESS, GENSET	
.XX	.05	29.0 EGED	
CAST	.03	DRAWN BY	DATE
FINISH	.02	JAS	08/10/16
		APPROVED BY	DATE
DIMENSIONS (WHEN APPLICABLE)		SCALE	REV.
		FULL	E
		SHT. 1 of 1	56371 A